



INDUSTRIAL PARK

TORRINGTON EASTSIDE



Whether you're launching an innovative startup, introducing your product to new markets, or expanding your thriving business, we offer one of Wyoming's leading industrial real estate values and a central location ideally suited to build your future.

Torrington East Side Industrial Park encompasses 87 acres with 46.8 available acres designed for light industrial manufacturing and other businesses, and provides convenient access to Rocky Mountain markets and the Midwest. Thirteen shovel-ready lots ranging in size from 2 to 5.3 acres have water, sewer, electric, and telecom available, and multiple adjacent lots can be purchased to establish a larger footprint that will meet your needs now and moving forward.

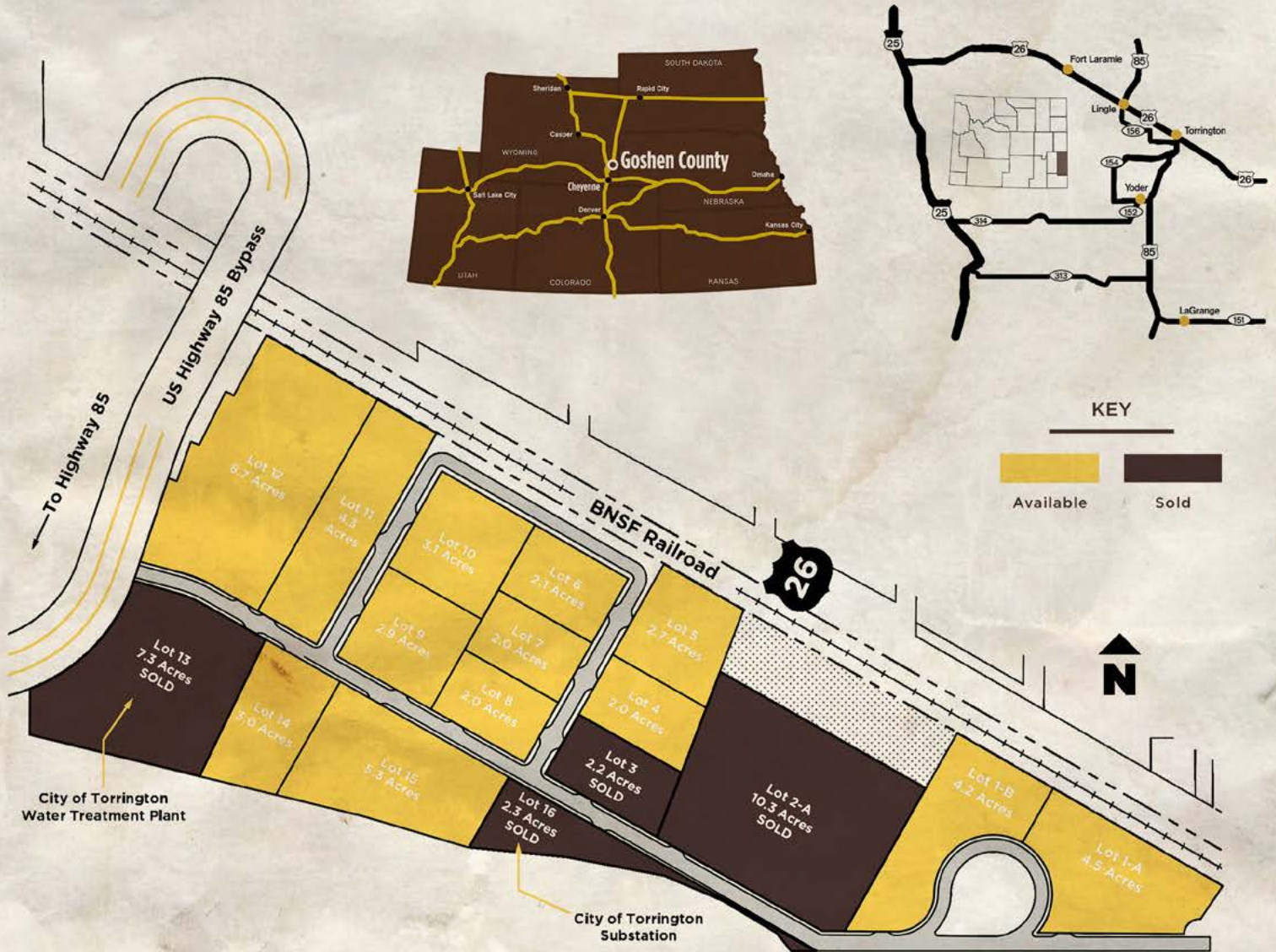
QUICK FACTS

- Number of acres: 46.8
- Elevation: 4,096
- Terrain: 0-3% slopes, well drained
- Soil type: Bankard loamy fine sand, Haverson and McCook loams
- Zoning: Light Industrial
- Water: 0.045 MGD
(excluding fire flow permitted capacity of the water system)
- Wastewater treatment: 1 MGD permitted capacity





Our Partners:



I-25 At Wheatland - 59 miles

Nearest Airports

Torrington - 1 mile
 Scottsbluff - 36 miles
 Cheyenne - 83 miles

Casper - 153 miles
 Denver - 188 miles

Distance to Metro Areas

Cheyenne, WY - 83 miles
 Denver, CO - 184 miles
 Rapid City, SD - 209 miles
 Billings, MT - 422 miles

Omaha, NE - 503 miles
 Salt Lake City, UT - 512 miles

CONTACT: LISA MILLER CEO/Executive Director
 Goshen County Economic Development Corp.

307-532-5162